

## NIPPON THOMPSON CO., LTD. (JAPAN)

Head Office : 19-19, Takanawa 2-chome, Minato-ku,  
Tokyo, 108-8586, Japan  
Phone : +81 (0)3-3448-5850  
Fax : +81 (0)3-3447-7637  
E-mail : ntt@ikonet.co.jp  
URL : https://www.ikont.co.jp/eg/  
Plant : Gifu, Kamakura



## IKO INTERNATIONAL, INC. (U.S.A.)

### East Coast Operations (Sales Head Office)

91 Walsh Drive,  
Parsippany, NJ, 07054,  
U.S.A.  
Phone : +1-973-402-0254  
Toll Free : +1-800-922-0337  
Fax : +1-973-402-0441  
E-mail : eco@ikonet.co.jp



### Midwest Operations

101 Mark Street, Unit-G,  
Wood Dale, IL, 60191,  
U.S.A.  
Phone : +1-630-766-6464  
Toll Free : +1-800-323-6694  
Fax : +1-630-766-6869  
E-mail : mwo@ikonet.co.jp

### Minnesota Sales Office

1500 McAndrews Road West, Suite 210,  
Burnsville, MN, 55337,  
U.S.A.  
Phone : +1-952-892-8415  
Toll Free : +1-800-323-6694  
Fax : +1-952-892-1722  
E-mail : mwo@ikonet.co.jp

### West Coast Operations

9830 Norwalk Boulevard, Suite 198,  
Santa Fe Springs, CA, 90670,  
U.S.A.  
Phone : +1-562-941-1019  
Toll Free : +1-800-252-3665  
Fax : +1-562-941-4027  
E-mail : wco@ikonet.co.jp

### Silicon Valley Sales Office

1500 Wyatt Drive, Suite 10,  
Santa Clara, CA, 95054,  
U.S.A.  
Phone : +1-408-492-0240  
Toll Free : +1-800-252-3665  
Fax : +1-408-492-0245  
E-mail : wco@ikonet.co.jp

### IKO website



<https://www.ikont.co.jp/eg/>

### Southeast Operations

3235 Satellite Boulevard Building 400, Suite 230  
Duluth, GA 30096  
U.S.A.  
Phone : +1-770-418-1904  
Toll Free : +1-800-874-6445  
Fax : +1-770-418-9403  
E-mail : seo@ikonet.co.jp

### Southwest Operations

8105 N. Bellline Road, Suite 130,  
Irving, TX, 75063,  
U.S.A.  
Phone : +1-972-929-1515  
Toll Free : +1-800-295-7886  
Fax : +1-972-915-0060  
E-mail : swo@ikonet.co.jp

## IKO THOMPSON BEARINGS CANADA, INC. (CANADA)

731-2425, Matheson Boulevard East, 7th floor,  
Mississauga, Ontario, L4W 5K4, Canada  
Phone : +1-905-361-2872  
Fax : +1-905-361-6401  
E-mail : itc@ikonet.co.jp

## IKO BRASIL SERVIÇOS EMPRESARIAIS EIRELI (BRAZIL)

Rua Frei Caneca 1407,  
Condominio Edifício Barão de Monte Cedro,  
Cjs. 801/802, Consolação, São Paulo- SP  
Cep : 01307-909  
Phone : +55 (0)11-2366-3033  
E-mail : itb@ikonet.co.jp

## NIPPON THOMPSON EUROPE B.V. (EUROPE)

### The Netherlands (Sales Head Office)

Keersopstraat 35,  
3044 EX, Rotterdam,  
The Netherlands  
Phone : +31 (0)10-462 68 68  
E-mail : nte@ikonet.co.jp



### Germany Branch

Mündelheimer Weg 54,  
40472 Düsseldorf,  
Germany  
Phone : +49 (0)211-41 40 61  
Fax : +49 (0)211-42 76 93  
E-mail : ntd@ikonet.co.jp

### Regensburg Sales Office

Im Gewerbepark D 30,  
93059 Regensburg,  
Germany  
Phone : +49 (0)941-20 60 70  
Fax : +49 (0)941-20 60 719  
E-mail : ntdr@iko-nt.de

### Products page



<https://www.ikont.co.jp/eg/product/index.html>

CAT-2958E 2020.09



ISO 9001 & 14001 Quality system registration certificate

**NIPPON THOMPSON CO., LTD.**

### Neunkirchen Sales Office

Gruben Str. 95c,  
66540 Neunkirchen,  
Germany  
Phone : +49 (0)6821-99 98 60  
Fax : +49 (0)6821-99 98 626  
E-mail : ntdn@iko-nt.de

### U.K. Branch

2 Vincent Avenue, Crownhill,  
Milton Keynes, Bucks, MK8 0AB,  
United Kingdom  
Phone : +44 (0)1908-566144  
Fax : +44 (0)1908-565458  
E-mail : sales@iko.co.uk

### Spain Branch

Autovia Madrid-Barcelona, Km. 43,700  
Polig. Ind. AIDA - Nove A-8, Ofic. 2-1<sup>a</sup>  
19200-Azuqueca de Henares,  
(Guadalajara) Spain  
Phone : +34 949-26 33 90  
Fax : +34 949-26 31 13  
E-mail : nts@ikonet.co.jp

### France Branch

Bâtiment le Raphaël-Paris, Nord 2,  
22 avenue des Nations  
BP54394 Villepinte  
95943 ROISSY C.D.G Cedex  
France  
Phone : +33 (0)1-48 16 57 39  
Fax : +33 (0)1-48 16 57 46  
E-mail : ntf@ikont.eu

## IKO THOMPSON ASIA CO., LTD. (THAILAND)

1-7 Zuellig House, 3rd Floor,  
Silom Road, Silom, Bangrak,  
Bangkok 10500, Thailand  
Phone : +66 (0)2-637-5115  
Fax : +66 (0)2-637-5116  
E-mail : ita@ikonet.co.jp

## IKO THOMPSON KOREA CO., LTD. (KOREA)

201, Worldvision Bldg., 77-1, Yeouinaru-ro,  
Yeongdeungpo-gu, Seoul, Korea  
Phone : +82 (0)2-6337-5851  
Fax : +82 (0)2-6337-5852  
E-mail : itk@ikonet.co.jp

## IKO-THOMPSON (SHANGHAI) LTD. (CHINA)

### Shanghai (Sales Head Office)

1608-10, Metro Plaza No.555, LouShanGuan  
Road, ChangNing District, Shanghai,  
People's Republic of China, 200051  
Phone : +86 (0)21-3250-5525  
Fax : +86 (0)21-3250-5526  
E-mail : ntc@ikonet.co.jp

### Beijing Branch

Room1506, Jingtai Tower,  
NO.24, Jianguomenwai Avenue,  
Chaoyang District, Beijing  
People's Republic of China, 100022  
Phone : +86 (0)10-6515-7681  
Fax : +86 (0)10-6515-7689  
E-mail : ntc@ikonet.co.jp

### Guangzhou Branch

Room 834, Garden Tower, Garden Hotel  
368 Huanshi East Road, Yuexiu District, Guangzhou,  
Guangdong  
People's Republic of China, 510064  
Phone : +86 (0)20-8384-0797  
Fax : +86 (0)20-8381-2863  
E-mail : ntc@ikonet.co.jp

### Wuhan Branch

Room 2300, Truroll Plaza No.72, Wusheng Road,  
Qiao kou District, Wuhan, Hubei,  
People's Republic of China, 430033  
Phone : +86 (0)27-8556-1610  
Fax : +86 (0)27-8556-1630  
E-mail : ntc@ikonet.co.jp

### Shenzhen Branch

Room1808, KEENSTAR Building 18,  
Chuanyue 2nd Rd 248, Bao'an,  
Shenzhen, Guangdong  
People's Republic of China, 518081  
Phone : +86 (0)755-2265-0553  
Fax : +86 (0)755-2298-0665  
E-mail : ntc@ikonet.co.jp

### Ningbo Office

Room 3406, Zhongnongxin Building, No.181,  
Zhongshan East Road, Haishu Ward, Ningbo,  
Zhejiang,  
People's Republic of China, 315000  
Phone : +86 (0)574-8718-9535  
Fax : +86 (0)574-8718-9533  
E-mail : ntc@ikonet.co.jp

### Qingdao Office

Room 1111, Building 9, Qingdao Science and  
Technology City, No. 7 Wuyang Road,  
North District, Qingdao City, Shandong,  
People's Republic of China, 266045  
Phone : +86 (0)532-8670-2246  
Fax : +86 (0)532-8670-2242  
E-mail : ntc@ikonet.co.jp

### Shenyang Office

2-1203 Tower I, City Plaza Shenyang NO.206,  
Nanjing North Street, Heping District, Shenyang,  
People's Republic of China, 110001  
Phone : +86 (0)24-2334-2662  
Fax : +86 (0)24-2334-2442  
E-mail : ntc@ikonet.co.jp

# IKO

Durable Motion Products

# for Food Processing Machines



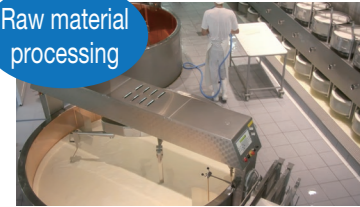
\* The specifications and dimensions of products in this catalog are subject to change without prior notice. • When these products are exported, the exporter should confirm a forwarding country and a use, and, in case of falling under the customer's requirements, take necessary procedures such as export permission application. • Although all data in this catalog has been carefully compiled to make the information as complete as possible, NIPPON THOMPSON CO., LTD. shall not be liable for any damages whatsoever, direct or indirect, based upon any information in this catalog. NIPPON THOMPSON CO., LTD. makes no warranty, either express or implied, including the implied warranty of merchantability or fitness for a particular purpose. • Reproduction and conversion without permission are prohibited.

<https://www.ikont.co.jp/eg/>

# IKO quality products are maintenance-free and safe for food and beverage production lines.

Increase food machine reliability with high quality, maintenance-free products.

Raw material processing



Machined Type Needle Roller Bearings  
Cam Followers  
Roller Followers  
Crossed Roller Bearings

Machining process



Cam Followers  
Roller Followers  
Linear Motion Rolling Guides

Heating process



Machined Type Needle Roller Bearings  
Linear Motion Rolling Guides

Conveying process

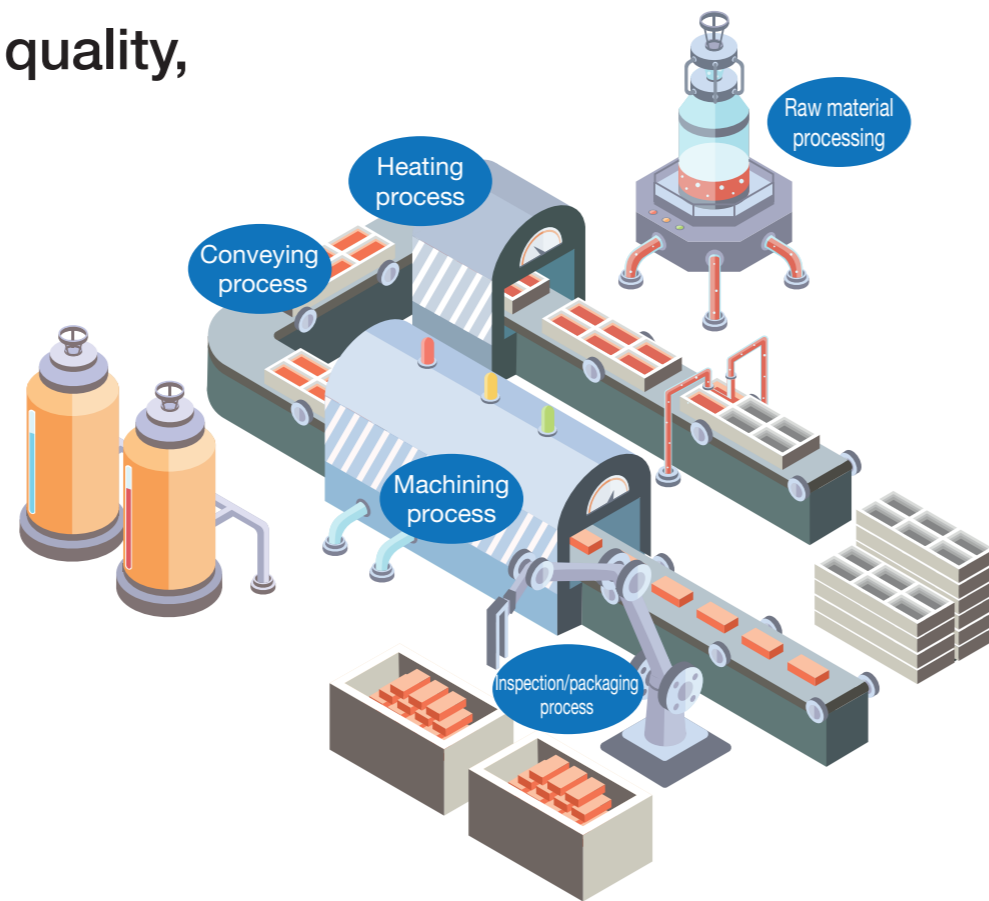


Linear Motion  
Precision Positioning Table  
Cam Followers

Inspection/packaging process



Linear Motion  
Precision Positioning Table  
Cam Followers  
Roller Followers  
Linear Motor Table



Improve the efficiency and speed of your beverage production lines.

01 Bottle forming process



Machined Type Needle Roller Bearings  
Shell Type Needle Roller Bearings  
Cam Followers  
Roller Followers

03 Filling process



Cam Followers  
Roller Followers  
Linear Motion  
Rolling Guides  
Linear Ball Spline

02 Cleaning process



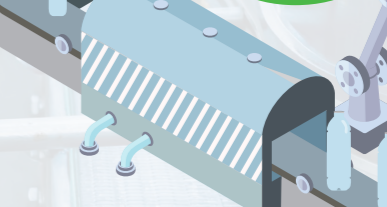
Linear Motion  
Rolling Guides  
Linear Ball Spline  
Precision Positioning Table  
Linear Motor Table

04 Capping and labeling process

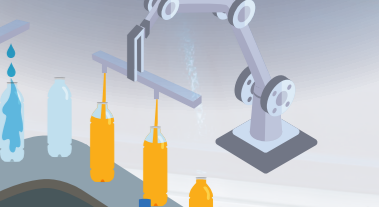


Cam Followers  
Roller Followers  
Crossed Roller Bearings  
Linear Motion Rolling Guides  
Linear Ball Spline

01 Bottle forming process



02 Cleaning process



03 Filling process



04 Capping and labeling process



05 Inspection/packaging process



05 Inspection/packaging process



Cam Followers  
Roller Followers  
Linear Motion  
Rolling Guides  
Precision Positioning Table  
Linear Motor Table

All IKO products are built with advanced technology and the highest quality



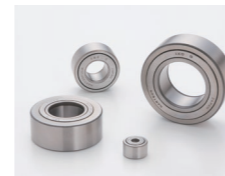
**Machined Type Needle Roller Bearings**  
A compact bearing with a low sectional height and large load ratings. The outer ring has high rigidity and can easily be used even for light alloy housings.



**Shell Type Needle Roller Bearings**  
The outer ring is made of carburized and quenched thin special steel plates, making it the smallest, lightest and most compact needle bearing in terms of sectional height.



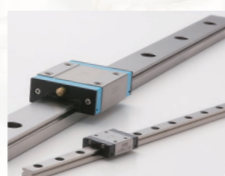
**Cam Follower**  
Bearings that have a stud in which needle rollers are incorporated in a thick walled outer ring. Since the studs already have threads, they are easy to mount. They are widely used as follower bearings for cam mechanisms and for linear motion purposes.



**Roller Followers**  
Bearings designed for outer ring rotation in which needle rollers are incorporated in a thick walled outer ring. They are widely used as guide rollers for cam mechanisms and for linear motion purposes.



**Crossed Roller Bearings**  
Compact bearings with their rollers alternately crossed at right angles to each other between inner and outer rings. It allows the bearing to handle complex loads simultaneously from any direction.



**Linear Way L Series**  
Compact linear motion rolling guide with a minimum rail width of 1 mm. Assures stable accuracy despite the super small size and light weight. Maintenance free specifications are available as standard.



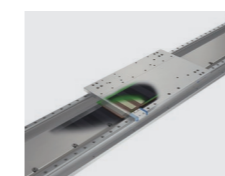
**Linear Way E Series**  
A versatile, compact, general-purpose linear motion rolling guide available in a variety of shapes and sizes. Maintenance free specifications are available as standard.



**Linear Ball Spline G Series**  
A compact linear motion rolling guide in which an external cylinder makes linear motion along the spline shaft. Stable accuracy and rigidity can be achieved even in applications where complex loads are applied. Maintenance free specifications are available as standard.

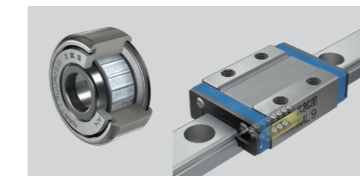


**Precision Positioning Table TE**  
Light weight and compact positioning table with high-strength aluminum alloy used for the main components. It utilizes a ball screw and also has our maintenance-free C-Lube component built into the linear motion rolling guide which provides long-term, maintenance-free performance.

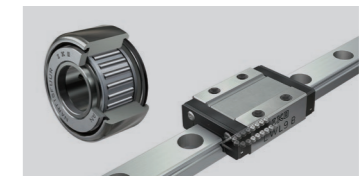


**Linear Motor Table LT**  
A positioning table made of aluminum alloy with an optical linear encoder built in and with AC linear servomotor incorporated between a moving table and bed. The advanced servo technology achieves high static stability and speed stability.

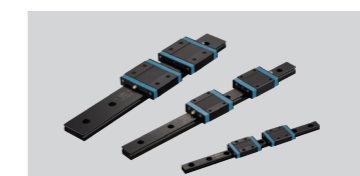
A line up of products with specifications that are ideal for food and beverage machines



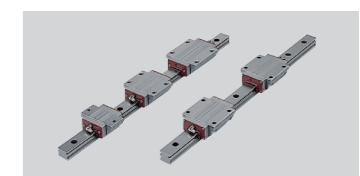
**Maintenance-Free C-Lube Products for Food Machinery**  
Our maintenance-free C-Lube technology utilizes a solid-type lubricant. It can be paired with NSF H1-certified lubrication oil and resin to comply with FDA standards and can safely be used with confidence in various food machinery applications.



**Stainless Steel Products**  
IKO offers a wide range of stainless steel products as standard. They are optimal for use in applications where oil and rust prevention oil are not preferred.



**Black chrome surface treatment**  
Black chrome surface treatment on the track rail and slide unit of the linear motion rolling guide improves rust prevention performance. They are optimal for use in areas with rust-prone atmospheres and when rust prevention oil is not preferred.



**Options for High Temperature Environments**  
The end seals, end plates and grease of the linear motion rolling guide can be replaced with special products that can be used in high temperature environments.